

# THE ALL-ROUNDER.

Sometimes, you need to be the jack-of-all-trades: Crimping, cutting, bending, punching and offsetting. With Klauke, you have every facility in just one tool.





# Universal tools

Hand-operated hydraulic universal tool, hydraulic universal head	472
Battery powered universal tools	475
Bus bar tool centre	479



# ONE TOOL FOR ALL SITUATIONS - UNIVERSAL TOOLS

Crimping, cutting or punching: Replaceable adapter and dies quickly adapt the tool to individual tasks. Low weight and powerful: Crimping up to 400 mm<sup>2</sup>, cutting up to 40 mm diameter or punching up to 92 x 92 mm, no problem at all for the Klauke Multi.

The Klauke Multi: The right tool in every instance.

**NEXT  
GENERATION**



## ► Systematic crimping

All crimping dies from Klauke function with every Klauke tool. Crimp cable lugs with the Klauke series 5, 18 and 22 (6 t tools) and wide crimping with the series 13 (12 t tools). Differing crimp shapes and nominal cross-sections up to 400 mm<sup>2</sup> can be processed with just one tool.

- Can be used with dies series 5, 18 and 22 (6 t)
- Wide crimping with dies series 13 (12 t) possible
- Cross sections up to 400 mm<sup>2</sup>
- Simple adapter replacement

## ► The plus one: Hole punching

Retooling of hole punches is really simple with the Klauke multi. In conjunction with hole punch adapters from Greenlee, you can punch holes up to 64 mm round and max. 92 mm x 92 mm square.

## ► All-around cutting

Stay prepared for various materials. Cables from copper and aluminium are not a problem with appropriate cutting head, likewise for DIN-profile rails, threaded bars or railway catenary wires. Klauke universal tool cuts everything up to 40 mm diameter.

- Differing materials can be cut: Aluminium and copper cables, threaded rods, profile rails, railway catenary wires
- The right cutting dies for every application
- Cutting range up to 40 mm

## ► Solid in use

The Klauke universal tool can also be used for machining operations on solid bus bars and laminated bus bars up to 120 mm x 12 mm. Bending, punching, cutting and offsetting with one device that can be operated with the AHP700L and the electric pumps from Klauke.



## HK 60 UNV Hand-operated hydraulic universal tool



- ▶ One head for crimping, cutting and punching - one tool for all
- ▶ Ideal in the assembly field where all common jobs can be carried out using one tool

### Characteristics

- Universal head flip top style, rotatable
- Adapter for crimping dies of the Klauke Series 5, 18 and 22
- Various cutting dies for aluminium and copper conductors with and without armouring as well as Al/St-Cables (ACSR)
- Dies for cutting threaded rods and DIN rails
- Punching adapter for Greenlee punching tools
- Dies to punch DIN rails
- Light weight due to high quality aluminium housing
- 2-stage hydraulic system with fast feed and power stroke
- Automatic retraction when operation is complete

### Technical instructions

- Interchangeable adapters and dies for crimping, cutting and punching you will find on page 478



Technical data		
Crimping force	60 kN	
Stroke	42 mm	
Crimping range	6 - 300 mm <sup>2</sup>	
Cutting range	max. 40 mm dia.	
Punching capacity	up to 64 mm dia. round, up to 92 x 92 mm square	
Length	540 mm	
Weight	3.5 kg	
Ambient temperature	-20 °C to +40 °C	
Item	Part No.	
Hand-operated hydraulic universal tool	<b>HK60UNV</b>	
Scope of supply	Part No.	Page
Steel carrying case	MK60UNV	



## Universal tools

Hand-operated hydraulic universal tool, hydraulic universal head

### PK 60 UNV Hydraulic universal head



- ▶ One head for crimping, cutting and punching - one tool for all
- ▶ Ideal in the assembly field where all common jobs can be carried out using one tool
- ▶ For connecting to hydraulic pumps with 700 bar operating pressure for best possible crimping, cutting and punching results

#### Characteristics

- Universal head with quick coupling, 360° rotation when not pressurised, flip top style
- Various cutting dies for aluminium and copper conductors with and without armouring as well as Al/St-Cables (ACSR)
- Dies to punch DIN rails
- Adapter for crimping dies of the Klauke Series 5, 18 and 22

#### Technical instructions

- Interchangeable adapters and dies for crimping, cutting and punching you will find on page 478

Technical data		
Crimping force	60 kN	
Stroke	42 mm	
Crimping cycle	3 s to 5 s (depending on crimping cross-section)	
Number of crimps	approx. 300 at 150 mm² Cu DIN	
Cutting range	max. 40 mm dia.	
Number of cuts	approx. 110 at 4 x 70 mm² NYY	
Punching capacity	up to 64 mm dia. round, up to 92 x 92 mm square	
Operating pressure	max. 700 bar	
Length	350 mm	
Weight	2.4 kg	
Item	Part No.	
Hydraulic universal head	PK60UNV	
Scope of supply	Part No.	Page
Carrying bag	TT2	192



## EKM 60 UNV Battery-powered hydraulic universal tool 6 - 300 mm<sup>2</sup>

**NEXT  
GENERATION**



- ▶ One head for crimping, cutting and punching - one tool for all
- ▶ Ideal in the assembly field where all common jobs can be carried out using one tool
- ▶ All tool data on view thanks to display and i-press® app
- ▶ Small and slim, perfect for cramped conditions

### Characteristics

- Choose your battery system: Bosch or Makita
- All data can be easily read via Bluetooth
- Universal head flip top style, rotatable
- Simple and safe: One-button operating concept for controlling all tool functions
- Effortless working due to balanced centre of gravity
- LED for work area illumination
- Simple and safe: Automatic retraction when operation is complete
- Always ready-to-use thanks to battery charge and service display

### Technical instructions

- Interchangeable adapters and dies for crimping, cutting and punching you will find on page 478



Technical data			
Crimping force	60 kN		
Stroke	42 mm		
Crimping range	6 - 300 mm <sup>2</sup>		
Crimping cycle	7 s up to 9 s (depending on cross-section)		
Cutting range	max. 40 mm dia.		
Punching capacity	up to 64 mm dia. round, up to 92 x 92 mm square		
Charging time	15 min.		
Weight	3.0 kg		
Ambient temperature	-10 °C up to +40 °C		
Item	Part No. <b>Bosch</b>	Part No. <b>Makita</b>	
Battery-powered hydraulic universal tool 6 - 300 mm <sup>2</sup>	<b>EKM60UNVCFB</b>	<b>EKM60UNVCFM</b>	
Scope of supply			Page
Bosch battery 18 V / 2.0 Ah, Li-Ion	RALB1EU		492
Bosch quick-charger for 18 V Li-Ion battery	LGLB1EU		494
Makita battery 18 V / 1.5 Ah, Li-Ion		RAL1	491
Makita quick-charger for 18 V Li-Ion battery		LGL1	494
Adapter for crimping dies of Series 22	UA22	UA22	478
Plastic case 450 x 370 x 105 mm	KKMUNVNG	KKMUNVNG	
Accessories			Page
Bosch battery 18 V / 5.0 Ah, Li-Ion	RALB2EU		493
Makita battery 18 V / 3.0 Ah, Li-Ion (54 Wh)		RAL2	491
Variants			Page
L-BOXX with battery powered universal tool EKM60UNVCFB	LBOXXEKM60UNVCFB		205
L-BOXX with battery powered universal tool EKM60UNVCFM		LBOXXEKM60UNVCFM	205



## Universal tools

Battery powered universal tools

### EK 60 UNV Battery-powered hydraulic universal tool 6 - 300 mm<sup>2</sup>

**NEXT  
GENERATION**



- ▶ One head for crimping, cutting and punching - one tool for all
- ▶ Ideal in the assembly field where all common jobs can be carried out using one tool
- ▶ Fast working due to 2-stage hydraulics
- ▶ All tool data on view thanks to display and i-press® app

#### Characteristics

- Choose your battery system: Bosch or Makita
- All data can be easily read via Bluetooth
- Universal head flip top style, rotatable
- Simple and safe: One-button operating concept for controlling all tool functions
- Effortless working due to balanced centre of gravity
- LED for work area illumination
- 2-stage hydraulic system with fast feed and power stroke
- Simple and safe: Automatic retraction when operation is complete
- Always ready-to-use thanks to battery charge and service display

#### Technical instructions

- Interchangeable adapters and dies for crimping, cutting and punching you will find on page 478



**K22  
SERIE**

**K18  
SERIE**

**K5  
SERIE**

#### Technical data

Crimping force	60 kN
Stroke	42 mm
Crimping range	6 - 300 mm <sup>2</sup>
Crimping cycle	3 s to 5 s (depending on cross-section)
Cutting range	max. 40 mm dia.
Punching capacity	up to 64 mm dia. round
Charging time	45 min.
Weight	4.8 kg
Ambient temperature	-10 °C up to +40 °C

Item	Part No. <b>Bosch</b>	Part No. <b>Makita</b>	
Battery-powered hydraulic universal tool 6 - 300 mm <sup>2</sup>	<b>EK60UNVCFB</b>	<b>EK60UNVCFM</b>	
Scope of supply			Page
Bosch battery 18 V / 5.0 Ah, Li-Ion	RALB2EU		493
Bosch quick-charger for 18 V Li-Ion battery	LGLB1EU		494
Makita battery 18 V / 4.0 Ah, Li-Ion		RAL40	492
Makita quick-charger for 18 V Li-Ion battery		LGL1	494
Plastic case 450 x 370 x 105 mm	UA22	UA22	478
Adapter for crimping dies of Series 22	KK120UNVNG	KK120UNVNG	

## EK 120 UNV Battery-powered hydraulic universal tool 10 - 400 mm<sup>2</sup>



- ▶ One head for crimping, cutting and punching - one tool for all
- ▶ Ideal in the assembly field where all common jobs can be carried out using one tool
- ▶ All tool data on view thanks to display and i-press<sup>®</sup> app

### Characteristics

- Choose your battery system: Bosch or Makita
- All data can be easily read via Bluetooth
- Universal head flip top style, rotatable
- Simple and safe: One-button operating concept for controlling all tool functions
- Effortless working due to balanced centre of gravity
- LED for work area illumination
- 2-stage hydraulic system with fast feed and power stroke
- Simple and safe: Automatic retraction when operation is complete
- Always ready-to-use thanks to battery charge and service display

### Technical instructions

- Interchangeable adapters and dies for crimping, cutting and punching you will find on page 478



**K13  
SERIE**














Technical data	
Crimping force	108 kN
Stroke	42 mm
Crimping range	10 - 400 mm <sup>2</sup>
Crimping cycle	Depending on cable type
Cutting range	max. 40 mm dia.
Punching capacity	up to 144 mm dia. round, up to 138 x 138 mm square
Charging time	45 min.
Weight	6.5 kg
Ambient temperature	-10 °C up to +40 °C

Item	Part No. <b>Bosch</b>	Part No. <b>Makita</b>	
Battery-powered hydraulic universal tool 10 - 400 mm²	<b>EK120UNVCFB</b>	<b>EK120UNVCFM</b>	
Scope of supply			Page
Bosch battery 18 V / 5.0 Ah, Li-Ion	RALB2EU		493
Bosch quick-charger for 18 V Li-Ion battery	LGLB1EU		494
Plastic case 450 x 370 x 105 mm	KK120UNVNG	KK120UNVNG	
Adapter for crimping dies	UA12TKL	UA12TKL	478





### Interchangeable adapters and dies for crimping, cutting or punching

Part description		Part no.	Tools	
Application: crimping			6 ton	12 ton
	Adapter for crimping dies series 5	UA5	●	
	Adapter for crimping dies series 13	UA12TKL		●
	Adapter for crimping dies series 18	UA18	●	
	Adapter for crimping dies series 22	UA22	●	
Application: cutting			6 ton	12 ton
	Cutting die for Al/Cu conductors to max. 40 mm dia.	UCACSR	●	●
	Cutting die for Al/Cu conductors to max. 26 mm dia.	UC26	●	●
	Cutting die for Al/Cu conductors to max. 40 mm dia.	UC40	●	●
	Cutting die for threaded rods M5 metric	UCM5	●	●
	Cutting die for threaded rods M6 metric	UCM6	●	●
	Cutting die for threaded rods M8 metric	UCM8	●	●
	Cutting die for threaded rods M10 metric	UCM10	●	●
	Cutting die for threaded rods M12 metric	UCM12	●	●
	Cutting die for threaded rods 1/4"	UCUNC14	●	●
	Cutting die for threaded rods 3/8"	UCUNC38	●	●
	Cutting die for threaded rods 1/2"	UCUNC12	●	●
	Cutting die for profile conductors 35 x 15	UCD3515	●	●
	Cutting die for profile conductors 32 x 15 x 9	UCD3215	●	●
	Cutting die for profile conductors 35 x 7.5	UCD3575	●	●
	Cutting die for profile conductors 2980	UCN2980	●	●
	Cutting die for laminated Cu bus bars, max. width 37.5 mm	UCF	●	
	Cutting die 107 mm² type AC for catenary wires in railway construction	UCAC107	●	●
	Cutting die 85 mm² type BC for catenary wires in railway construction	UCBC85	●	●
	Cutting die 110 mm² type BC for catenary wires in railway construction	UCBC110	●	●
	Cutting die 120 mm² type BC for catenary wires in railway construction	UCBC120	●	●
	Cutting die 150 mm² type BC for catenary wires in railway construction	UCBC150	●	●
Application: Punching			6 ton	12 ton
	Hole punch adapter for holes to 64 mm dia., 92 x 92 mm and 46 x 92 mm	UA6P	●	
	Hole punch adapter for holes to 144 mm dia., 138 x 138 mm and 68 x 138 mm	UA12P		●
	Die for punching DIN rails 35 x 15; 32 x 15 x 9; 35 x 7.5	UPD6	●	



## Bus bar tool centre



- ▶ Basic tool for bending, punching and cutting solid and laminated bus bars up to 120 x 12 mm
- ▶ Compact design and low weight

### Suitable for

- Drive with EHP4 or AHP700-L

### Additional information

- For drives with EHP4 the Part Number appendix „EHP4“ is required (50052241EHP4)  
For drives with AHP700-L connector Sbz4 is required.

Technical data	
Crimping force	185 kN
Max. operating pressure	700 bar
Capacity	1.5 l / min.
Required oil volume	0.15 l
Dimension	480 x 500 x 360 mm
Weight	51 kg
Item	Part No.
Bus bar tool centre for operation with AHP700-L	<b>50052241</b>

## Bending tool



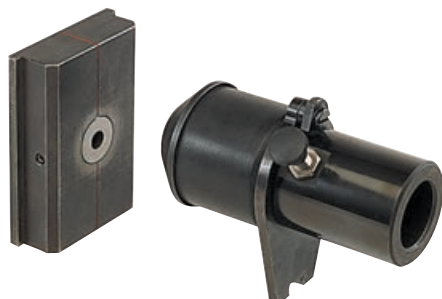
- ▶ For Al/Cu materials to max. 120 x 12 mm
- ▶ Bending radius 5.00 mm

### Characteristics

- Max. bending angle 100°

Technical data	
Weight	7.1 kg
Item	Part No.
Bending tool, 5.0 mm bending radius	<b>50052250</b>

## Punching tool I



### Characteristics

- Solid conductors from Al/Cu to max. 12 mm and steel to 10 mm thick

### Suitable for

- Hole diameters from 6.5 - 21 mm

Technical data	
Weight	4.5 kg
Item	Part No.
Punching tool I	<b>50052128</b>

## Punching tool I



### Characteristics

- Solid conductors from Al/Cu to max. 12 mm and steel to 10 mm thick

Item	Part No.
Punch and die 6.5 mm dia.	50052276
Punch and die 8.5 mm dia.	50052284
Punch and die 11 mm dia.	50052292
Punch and die 13 mm dia.	50052306
Punch and die 15 mm dia.	50052314
Punch and die 17 mm dia.	50052322
Punch and die 21 mm dia.	50052330
Oblong punch and die 6.5 x 13 mm	50052349
Oblong punch and die 8.5 x 16 mm	50052357
Oblong punch and die 11 x 20 mm	50052365
Oblong punch and die 13 x 20 mm	50052373
Oblong punch and die 17 x 20 mm	50052381

## Punching tool III



### Characteristics

- Solid and laminated bus bars from Al/Cu to max. 12 mm and steel to 10 mm thick

### Suitable for

- Hole diameters from 6.5 - 21 mm

Technical data	
Weight	4.5 kg
Item	Part No.
Punching tool III	50766919

## Punch & die for punching tool III



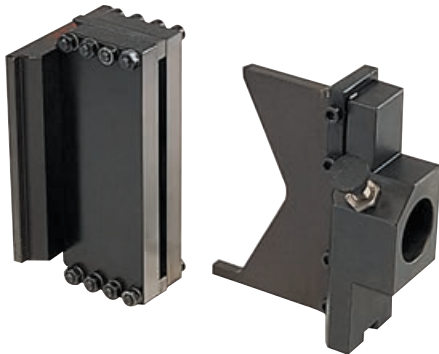
### Characteristics

- Solid and laminated bus bars from Al/Cu to max. 12 mm and steel to 10 mm thick

Item	Part No.
Punch and die 6.5 mm dia.	50115286
Punch and die 8.5 mm dia.	50115294
Punch and die 11 mm dia.	50115308
Punch and die 13 mm dia.	50115316
Punch and die 15 mm dia.	50115324
Punch and die 17 mm dia.	50115332
Punch and die 21 mm dia.	50115340
Oblong punch and die 6.5 x 13 mm	50115359
Oblong punch and die 8.5 x 16 mm	50115367
Oblong punch and die 11 x 20 mm	50115375
Oblong punch and die 13 x 20 mm	50115383
Oblong punch and die 17 x 20 mm	50115391



## Cutting tool



### Characteristics

- For Al/Cu materials to max. 120 x 12 mm

Technical data	
Weight	5.3 kg
Item	Part No.
Cutting tool	<b>50052144</b>

## Offset tool



### Characteristics

- Workpiece offset 5, 6, 8, 10 and 12 mm by using insertion plates
- For Al/Cu materials to max. 120 x 12 mm

Technical data	
Dimension	175 x 90 x 135 mm
Weight	10.0 kg
Item	Part No.
Offset tool	<b>50052152</b>

## Aluminium accessory box for punching tools, empty



### Suitable for

- Storage of accessories

Technical data	
Dimension	350 x 250 x 200 mm
Weight	4.3 kg
Item	Part No.
Tool chest alu (empty)	<b>50052160</b>